



# New Features Overview

*(a.k.a Smaart v8 for v7 users)*

## This Guide – Start Here

This guide is a quick reference to help you get acquainted with what is new in Smaart v8, written specifically for users upgrading from and familiar with Smaart v7.

If you are new to Smaart, or have had limited experience operating version 7, we would strongly recommend consulting the full Smaart v8 User Guide (available via download from the support section of [rationalacoustics.com](http://rationalacoustics.com), or from within your software license account at [my.rationalacoustics.com](http://my.rationalacoustics.com)) and/or the program's extensive help files (found in the Smaart v8 "Help" menu).

While much of the measurement functionality and operational paradigms of v8 are the same as those of v7, there have been some significant changes. Before simply diving into the software, as most of us will do, it is highly recommended that you read at least the short section titled ***"New in Version 8, Some Key Concepts"*** located just after the table of contents. It will help you get your bearings as you navigate v8.

Also, remember that Smaart is an actively developing platform. The initial release version 8.0.0 includes the features and functionality detailed here. However new v8 "update" releases will be published regularly over the coming months and years to add new features and mature the platform, as well as to address Smaart's inevitable "undocumented features" (a.k.a. bugs) and the operating system changes that Microsoft and Apple offer up. These "after dot" updates are free to all registered v8 licensees, and can be accessed from within your license account at [my.rationalacoustics.com](http://my.rationalacoustics.com). These periodic releases will be announced on our website and via our newsletter (which if you have not already done so, we would highly recommend signing up for on our site).

One final note, please feel free to contact Rational Acoustics at [support@rationalacoustics.com](mailto:support@rationalacoustics.com) for help with any Smaart issues, to report software bugs or to suggest/request new features and functionality for future updates.

## Table of Contents

|  |           |
|--|-----------|
| <b>This Guide – Start Here .....</b>   | <b>2</b>  |
| <b>Table of Contents .....</b>   | <b>3</b>  |
| <b>New in Version 8 – Some Key Concepts .....</b>                              | <b>5</b>  |
| Measurement “Groups” have become “Tabs” .....                                  | 5         |
| Version 8 is a Multi-Window environment .....                                  | 5         |
| Auto-Configuration .....   | 5         |
| Focus!! .....  | 5         |
| <b>Smaart v8 User Interface .....</b>  | <b>6</b>  |
| The Tab Bar .....  | 6         |
| The Control Bar .....  | 7         |
| The Command Bar .....  | 7         |
| The Data Bar .....   | 7         |
| <b>V8 Application Start: .....</b>   | <b>7</b>  |
| First Run / Restore Defaults .....   | 8         |
| Returning.....   | 8         |
| Continue with the current configuration: .....                                 | 8         |
| Create a new configuration:.....   | 9         |
| Select a previous configuration:.....  | 9         |
| <b>A Note about “Configurations”:</b> .....                                    | <b>9</b>  |
| Data and Configuration file location: .....                                    | 9         |
| <b>The v8 Configurator: All-In-One IO, Measurement, and Meter Config .....</b> | <b>10</b> |
| The IO Config Tab.....   | 10        |
| The Measurement Config Tab .....   | 11        |
| Tabs .....   | 11        |
| Windows .....  | 11        |
| The Meter Config Tab .....   | 12        |
| <b>Automation of Measurement Creation .....</b>                                | <b>13</b> |
| Measurement Definition by Name: Singularity of Measurement Names .....         | 13        |
| Singularity of Measurement Name Definition – the Rules.....                    | 14        |
| On-The-Fly Measurement Creation .....  | 14        |
| Duplicating & Moving Measurement Engines .....                                 | 15        |
| <b>Tabbed Workspaces .....</b>   | <b>16</b> |
| Creating Measurement Tabs .....  | 16        |
| Destruction of Tabs .....  | 17        |
| <b>Multi-Window Interface .....</b>  | <b>17</b> |
| Creation.....  | 17        |
| Naming .....   | 17        |
| Destruction .....  | 18        |
| <b>Data Storage &amp; Active Plot Legend .....</b>                             | <b>18</b> |
| <b>Broadband Meters .....</b>  | <b>19</b> |

|   |           |
|---|-----------|
| Logging and LEQ.....  | 19        |
| SPL Meter Names.....  | 19        |
| <b>New Menu Bar Layout .....</b>                              | <b>21</b> |
| <b>Command Bar &amp; Command Bar Configuration .....</b>      | <b>23</b> |
| New Hot Keys .....  | 24        |
| <b>Smaart v8 API &amp; Client Window.....</b>                 | <b>24</b> |
| A note about network speed .....                              | 25        |
| Server Preparation.....                                       | 25        |
| Accessing the Client Window .....                             | 25        |
| Supported Measurements .....                                  | 26        |
| Spectrum: RTA and Spectrograph .....                          | 26        |
| Transfer Function: Magnitude and Phase .....                  | 26        |
| Supported Commands .....                                      | 26        |
| Signal Generator .....  | 27        |
| Trace Capture .....   | 27        |
| Unsupported Measurements/Features/Options .....               | 27        |
| <b>Program Skins .....</b>                                    | <b>27</b> |
| <b>Licensing, Registration, and System Requirements .....</b> | <b>28</b> |
| Minimum Suggested Computer System Requirements.....           | 28        |
| Windows .....   | 28        |
| Mac .....   | 28        |
| <b>High Definition Display Support.....</b>                   | <b>28</b> |
| <b>Glossary of Terms .....</b>                                | <b>29</b> |
| <b>Configuration Ownership.....</b>                           | <b>31</b> |

## New in Version 8 – Some Key Concepts

Smaart Version 8 expands the previous v7 GUI (Graphic User Interface) to provide greater display functionality, measurement capability and refines its organizational and control paradigms. In order to best understand these changes, familiarity with the following basic structural concepts will be helpful.

### Measurement “Groups” have become “Tabs”

In version 7, we organized and controlled our measurement configurations using separate groups of defined Spectrum (single-channel) and Transfer Function (dual-channel) measurements. By switching the active Spectrum or TF groups, we controlled what measurements were actively configured and available.

In version 8, to organize and control our measurement environment we now use “Tabs” that include both the active measurement configuration as well as the GUI configuration/layout.

Version 8’s tabs:

- Use mixed groups, groups that can contain both Spectrum and TF measurements
- Retain plot view, interface layout and captured data information.

***NOTE: While v8’s Tabs can contain mixed groups, the control and data bars still reflect only the type of measurement, Spec or TF, that corresponds with the active plot (as in v7).***

Switching between Tabs allows us to quickly configure and re-configure Smaart’s measurement environment with the fundamental restriction that ***only one tab can be active at a time in a given Window*** . . . however . . .

### Version 8 is a Multi-Window environment

V8 allows you to configure and simultaneously run multiple (multi-tabbed) measurement windows across multiple displays – with the limits only being your display capability and CPU/GPU capacity. Also, Smaart v8 includes some dedicated, special-purposed windows – most notably, the broadband meters and the API Client Window.

### Auto-Configuration

Smaart v8 has added a significant amount of automation to its measurement configuration in order to streamline and speed up the process, increase consistency and reduce errors. This guide details those additions.

### Focus!!

Controlling Smaart v8 requires a basic awareness of which GUI element has the program’s current focus – which window/tab/measurement /plot/dialog/control. This focus will determine how Smaart interprets commands. Also, be aware of which settings and controls are Global (effect all Windows, Measurements, Plots, etc) and which are only Window, Tab, Plot and even Measurement specific. A basic list of this “control ownership” is provided at the end of this document.

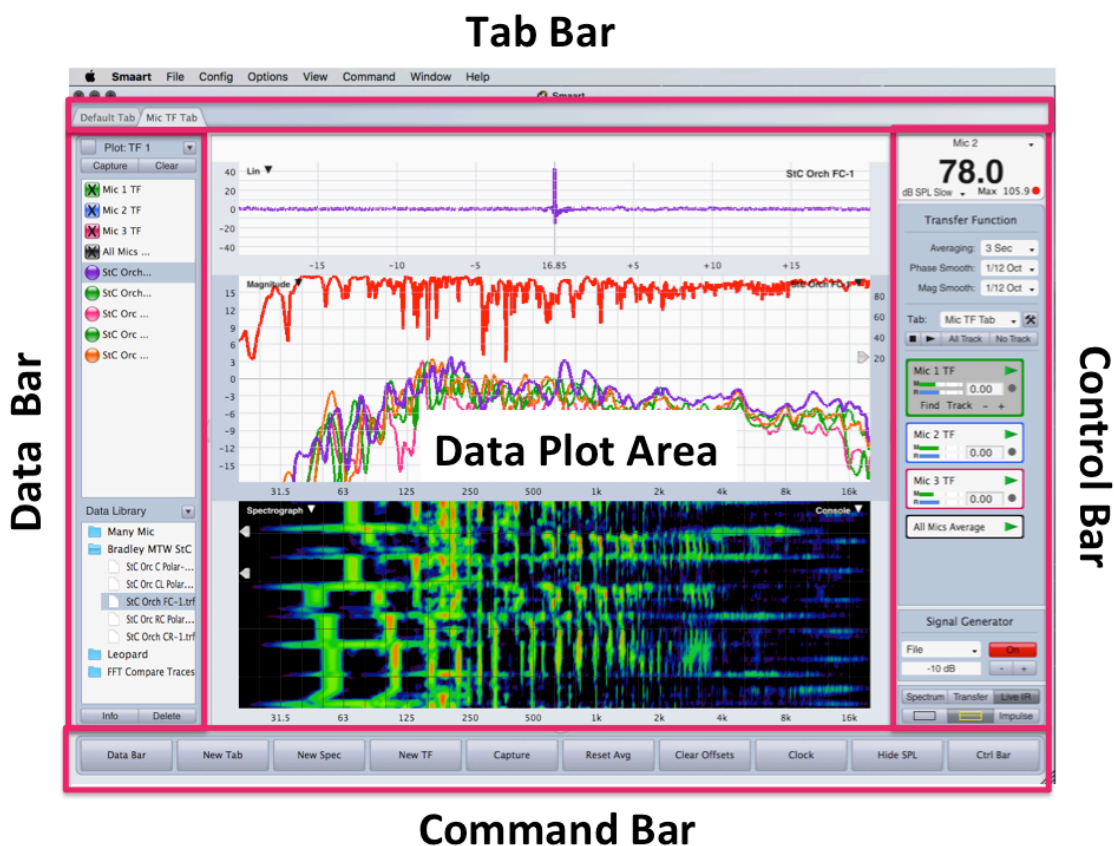
## Smaart v8 User Interface

The basic v8 interface is a familiar one for anybody coming from v7, though you will notice some tweaks and enhancements that make this GUI more customizable. Each of the 4 Interface bars (Tab, Control, Command and Data) can be shown or hidden. Additionally, the Data Bar can be expanded horizontally to allow for longer trace names, and the SPL/Clock readout can be hidden from the Control Bar.

**The Interface Bar configuration is stored individually per Tab.**



The Data Bar (left), Command Bar (bottom) and Control Bar (right) can each be toggled in and out using their triangular show/hide widgets located in the margin between the interface bar and the plot area.



## The Tab Bar

This area of the interface shows the window's configured Tabs and can be used to select the active Tab. This bar can be hidden from the view menu or with the hot-key [A]. Note: This command is currently global – hide/show applies to all windows.

## The Control Bar

This area shows the controls for all engines of the active plot measurement type available in the active Tab. It also includes the Window's SPL Meter (which can be toggled in/out), as well as the Signal Generator and view controls. The individual measurement engine control elements now indicate their trace color in their border, and their hide/show controls have been moved to the APL (Active Plot Legend) in the Data Bar. The Signal Generator control area has been expanded in size and moved to the bottom of the Control bar along with the plot view controls. The Control bar can be shown or hidden with the hot-key [O] or its triangular hide/show widget.

## The Command Bar

This area holds 10 user-configurable 'buttons' that trigger specific hot-key commands. These buttons are configurable from the Config menu (Menu Bar > Config > Command Bar Config), can be set to activate any Hotkey command, and can even be given user-definable names. In conjunction with the addition of the Command Bar, we have significantly increased the number of Smaart's functions accessible via HotKey. The command bar can be shown or hidden using the hot-key [U] or its triangular hide/show widget.

## The Data Bar

Smaart v8's Data Bar is currently divided into two sections. The Top section of the Data Bar contains the APL (Active Plot Legend). The APL shows a listing of the traces available (currently loaded into RAM) to display in the active plot. This includes both Live measurements (square icons) and static data (circular icons). The APL trace icons indicate the trace color and its current display (hide/show) status. It also displays the current trace offset if one has been applied. Traces can be removed from the APL by selecting a trace and clicking the [Clear] button. Traces can be moved back into the APL by capturing new data, or by clicking+dragging a stored trace from the Data Library.

The lower section of the Data Bar contains Smaart's Data Library. This shows reference traces captured to file. When a measurement trace is captured in v8, it is stored in the APL (RAM) for immediate display **and** written to a file in the data library (written to disc). Deleting a file from the Data Library deletes that file from your hard drive (places it in your trash). From the Data Library's drop-down menu, you can set the root file on your hard drive that the data library is accessing and writing to. From the File menu, you can import traces and trace folders into that root folder (or you can just drag them into the data library window from your OS's file system.)

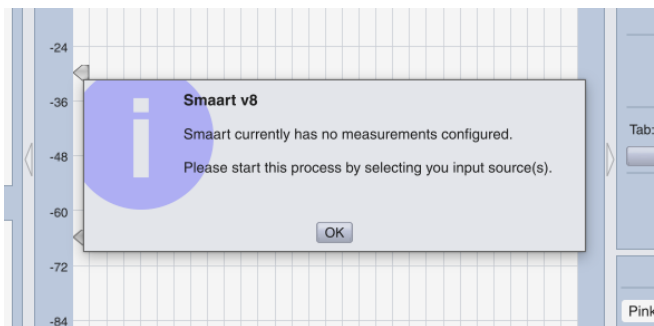
The data bar can now be resized horizontally by clicking and dragging it horizontally from its rightmost border. The Data Bar can be shown or hidden using the hot-key [B] or its triangular hide/show widget.

## V8 Application Start:

When you launch v8 you will be presented with one of two dialog boxes depending on whether you are launching it for the first time (or restoring defaults), or returning to the application.

## First Run / Restore Defaults

Launching the Smaart v8 application for the first time will prompt you with the message “Smaart currently has no measurements configured. Please start this process by selecting your input source(s).” dialog (see below). Restoring the program to defaults in Manage Config will also cue this dialog after the program re-starts.

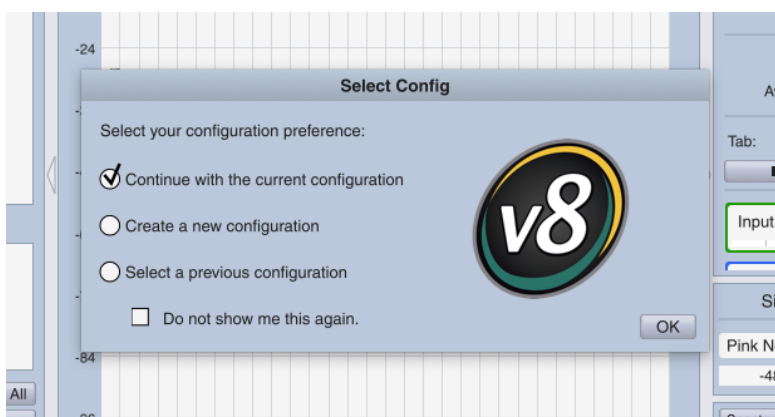


Selecting OK takes you to the IO Config. From here, select the device and channels you wish to use for measurement and give them friendly names if you wish. Smaart will not allow you to proceed until you’ve selected an input source.

Note: When “restoring Defaults”, all of Smaart’s Option settings are set back to their default first run settings and the current measurement configuration is completely cleared. All previously stored configurations still remain available from the “Manage Configurations” dialog.

## Returning

When you first launch v8, you will be presented with the screen below, giving you three choices.



## Continue with the current configuration:

This is effectively the “do nothing” option. Selecting OK will close the dialog and present you with the Smaart interface and program configuration exactly as you left it last run-time.



***Note: Checking the “Do not show me this again” option will make the “Continue with current configuration” option the automatic behavior on start-up until “Restore Defaults” is run from the configuration manager.***

#### Create a new configuration:

Choosing this option will wipe out the measurement configuration (IO, Measurement and Meter Configurations) but will leave all other current Options settings intact. This then puts you back to ‘first run’ behavior for IO selection and measurement creation.

#### Select a previous configuration:

Choosing this option allows you to load a previously stored configuration from the Manage Configurations dialog.

#### A Note about “Configurations”:

There are two types of configurations in Smaart, “Measurement” and “Program”, with the former being a subset of the latter.

A **Measurement Configuration** refers to the settings created in the I-O Config, the Measurement Config (Measurements, Tabs and Windows) and Meter Config. These are the settings that define your measurement set-up and are wiped clean when the “create a new configuration” option is chosen on start-up.

A **Program Configuration** refers to all of Smaart’s settings, its measurement configuration as well as all options (e.g. command bar configuration, GUI Skins, cursor display preferences, etc). The Program Configuration is what is stored and recalled from Smaart’s Configuration Manager. Measurement data is not included in a Program Configuration.

#### Data and Configuration file location:

Smaart v8 will create a root directory folder named “**Smaart v8**” in the Documents area of your computer to store Smaart data and Config files. Included are individual folders for stored Configs, Logs, Skins, and Traces. This facilitates easier sharing of data between users, with less digging through your computers HD library.

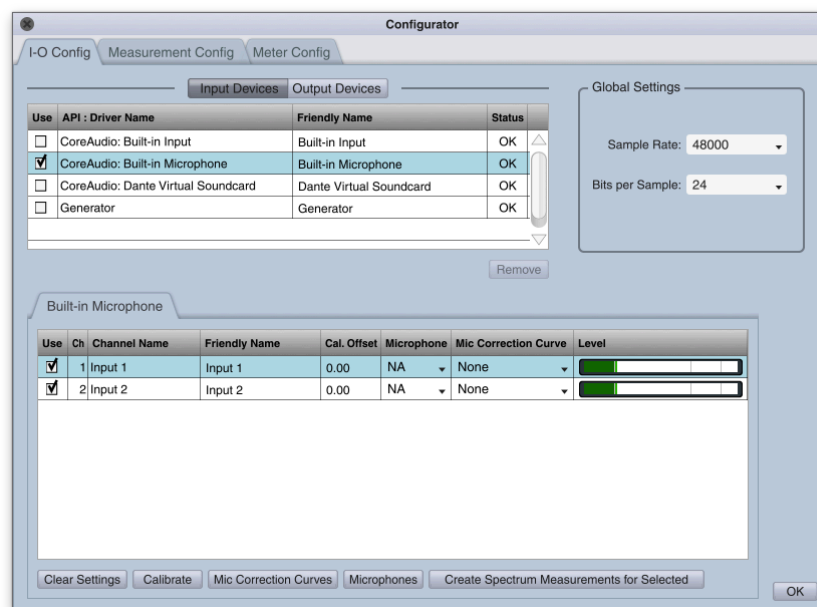
## The v8 Configurator: All-In-One IO, Measurement, and Meter Config

Configuration in v8 follows a relatively simple conceptual thread:

1. Choose your input devices and channels – Spectrum measurements will automatically be created for all selected input channels
  - Provide friendly names and calibration information for those devices/channel (optional)
2. Create additional Spectrum, Transfer Function and Broadband measurements using those sources
3. Create Tabs to organize your measurements
4. Create Windows as needed

### The IO Config Tab

V8's IO Config combines the two Audio Device Options dialog windows from v7, with a few enhancements – most notably the addition of live input signal meters and the replacement of 'ignore' check box with a more intuitive 'use' button. **In v8 we now 'choose to use' whichever input devices and channels we wish to use.**



The measurement configuration process begins with designating which devices and channels to acquire measurement signals from. This window displays the current status of the devices. The default is no sources checked for Input Devices and all sources checked for Output Devices. When you select a device, its device detail (with input meters) shows up below. When an input device is selected, the first eight (8) input channels on that device are also selected. For devices with more than 8 channels, the remaining channels must be manually selected for use.

***Note: upon selection of input channels, spectrum measurement engines will automatically be created using the channel's friendly name in the Default Tab.***

***Changing the friendly name will correspondingly change the name of the measurement engine.***

## The Measurement Config Tab

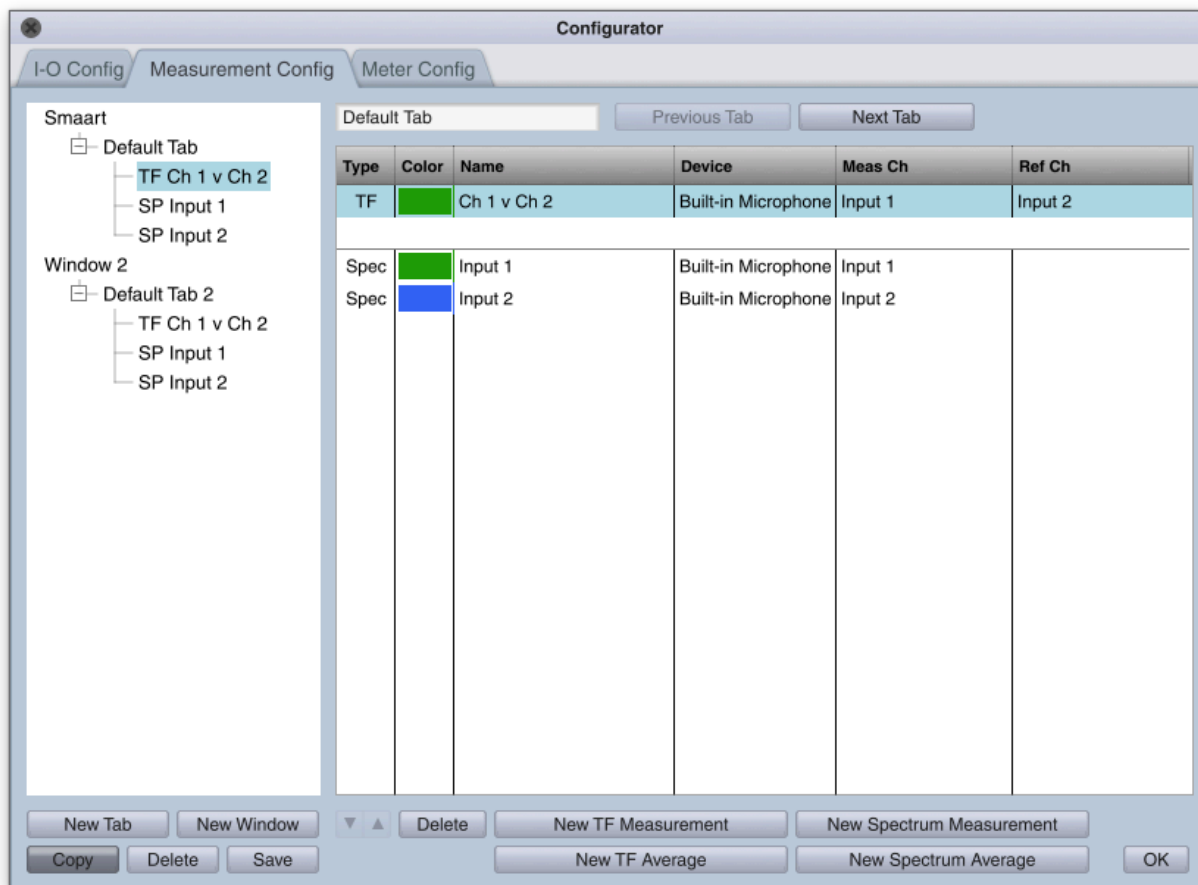
The Measurement Configuration dialog is a central location to manage measurement engines (including their creation/deletion, duplication, and tab assignments) as well as Tab and Window configurations.

## Tabs

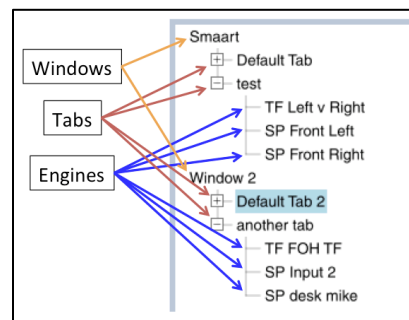
Tabs are effectively enhanced Groups from v7. They are containers for configured ***Spectrum and TF engines***. Each tab will remember its layout and measurement data. Only one tab can be active in a window at a time.

## Windows

Windows act as containers for Tabs. Windows are effectively multiple instances of the Smaart GUI which can be displayed on any one, or across many computer monitors. Multiple windows can be actively running simultaneously.



The **configuration tree** on the left side of the dialog displays the hierarchical structure of the current Smaart measurement configuration with Windows – Tabs – Measurements/engines. Here a user can add Windows and Tabs, as well as copy Tabs between windows, or measurements between tabs (click and drag).



**NOTE: *Copy is the default behavior for click+drag, so if you wish to move a measurement without creating a copy of it, you must de-select the Copy button in the lower left corner of the window.***

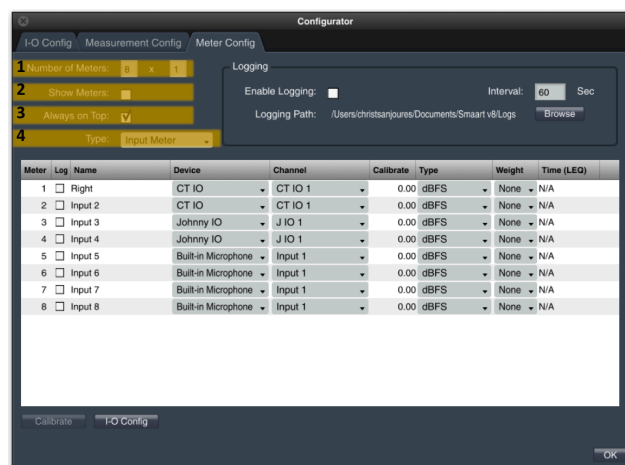
The right-hand window in this dialog displays the Tab or Measurement engine detail info. Select the tab or measurement detail being displayed by single-clicking the name of the target measurement or tab in the configuration tree, or by using the up and down arrows to step through the selected Tab/Measurement in the Configuration tree.

In the Tab and Measurement detail windows, you can rename the current Tab/Measurement, create new measurements within that Tab, or rename, reorder, delete or change the color of current measurements in the Tab.

Copying a Measurement will create a new engine with the same definition (name, input(s) and color). This creates some consistency between duplicate engines in multiple tabs/windows.

### The Meter Config Tab

Smaart v8's Broadband Meters are configured as grids, where a user may define how many inputs to monitor based on how big they make the grid. For example, monitoring 8 inputs could be done in a row of 8 (8x1) or, 2 rows of 4 (4x2) or 4 row of 2 (2x4) and so on with as many inputs as you choose. Besides selecting on its tab in the Configurator, you can access the Meter Config dialog by heading to the Menu Bar > Config > Broadband Meters or the hot-key combo [shift] + [Control] + [E]. Clicking the SPL readout or input meter area of the broadband meters will also bring you here.



The Broadband Meters grid is displayed as its own Window, and can be resized and placed/assigned to displays as needed. The user can choose to have it “always display on top” or follow the standard z-ordering of windows in a display.

Broadband Meter Config controls:

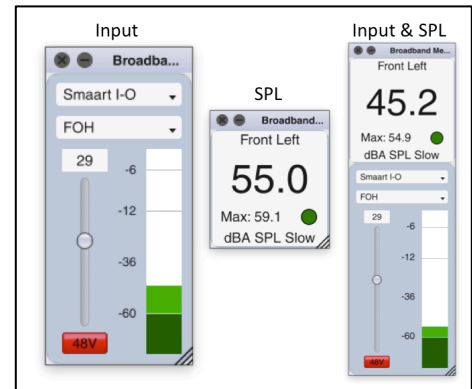
**Number of Meters** - Broadband meters are configured as simple grids. For example, typing 4x2 will create a window with 8 meters, in two rows 4 over 4. 8x1 would result in 8 inputs horizontally, or 8x2 would offer 16 meters, 8 over 8 etc...

**Show Meters** - this is the same as pressing the [E] key, toggling show/hide meter window.

**Always on Top** - enabling this feature will keep the Broadband Meter window on top of all application windows, Smart or not, regardless of what window has focus.

**Type** - You can choose to display each inputs SPL readout, Input Meter, or both.

See the Broadband Meters section of this document for more.



## Automation of Measurement Creation

A lot of attention has been paid in v8 to automating the measurement creation process by adding some basic logic to the program. In most cases, you won't need to manually create a Spectrum engine ever again. You will see this primarily in two ways;

- Selecting the inputs of the devices you will be using automatically creates the corresponding Spectrum engines, with the input's Friendly Name as the engine name. These engines will be put into the default window's default tab.
- Creating a TF measurement in any tab will automatically trigger v8 to create corresponding Spectrum engines for the TF measurement's signal pairs. Again, Smart will name the Spectrum engines using the Friendly Name as assigned in IO Config. If a Spectrum measurement engine with that name/definition already exists in the tab Smart will recognize that and not create a duplicate.

## Measurement Definition by Name: Singularity of Measurement Names

The measurement configuration process in v8 makes use of the following fundamental concepts and rules to create a configuration environment where a **Measurement Name ALWAYS refers to the same measurement definition** (type & input signals) and color assignation. This creates consistency in our measurement configuration and helps for quick measurement definition.

## Singularity of Measurement Name Definition – the Rules

Measurement names must be unique within a Tab – a Tab can't contain two measurements of the same name.

Within a measurement configuration, a given name for a Spectrum or Transfer Function measurement shall always refer to the same type, input signal and trace color definitions. In other words, all measurements with the exact same name (not case sensitive) shall be restricted to having the same definition.

There can exist within a configuration, or even within the same tab, multiple measurements of the same definition as long as they have different names.

These stipulations require the following behaviors within Smaart v8's measurement configuration mechanism with regards to measurement names:

- Upon creation of a new measurement
  - if a name is entered that already exists in that tab, the user is prompted to provide an alternate, unique name.
  - if a name is entered that already exists in the configuration, the user is prompted to
    - use the existing measurement's input definitions (default choice – just hit enter)
    - provide a unique name
- Upon modification of an existing measurement's Name (where multiple measurements with the same name exist.)
  - If the name is changed to a unique name, the user is prompted "do you wish to apply this to all [previous name]?"
    - If "yes" - the name change is applied to all of the measurements of the same name in the current configuration.
    - If "no" - the name change is only applied the individual measurement
  - if a name is changed to one that already exists in the configuration (but not in that tab), the user is prompted to
    - use the existing measurement's input definitions
    - provide a unique name
- Upon modification of an existing measurement's input signal definitions or color, those changes are applied to all other corresponding measurements of the same name.

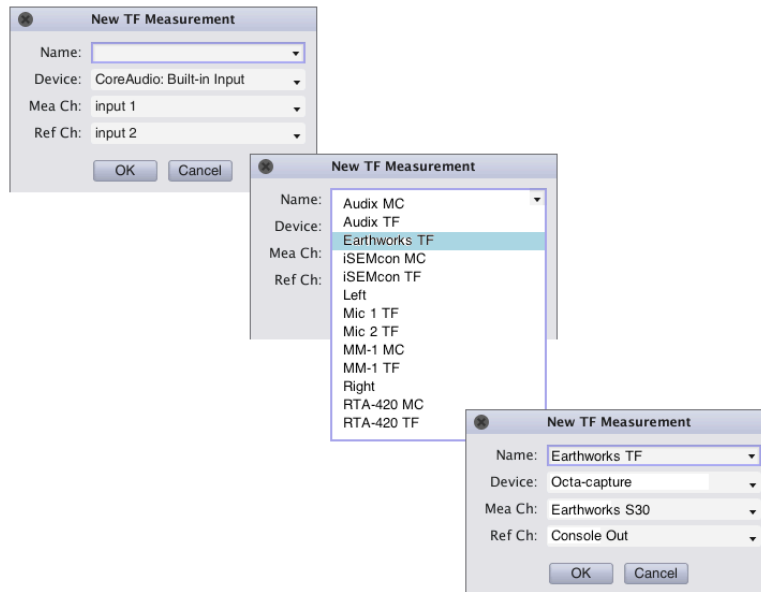
## On-The-Fly Measurement Creation

At any point, without going to the configurator, it is possible to add/create new measurement engines into the Tab workspace you are currently on.

- For Spectrum Measurements, press [CMD +S] on a Mac or [CTRL +S] in Windows.

- For Transfer Function Measurements, press [CMD+T] (Mac) or [CTRL+T] (Windows).

These commands open up the familiar ‘New \_\_\_\_\_ Measurement’ creation window, though with new behavior for the Name field. As you type the name of a measurement, Smaart will fill in the rest until a unique name has been entered (see above). This is very much like typing a search term into The Google, where it auto-populates search terms based on common ones, however in our case these common names are engines you’ve already created in other tabs.



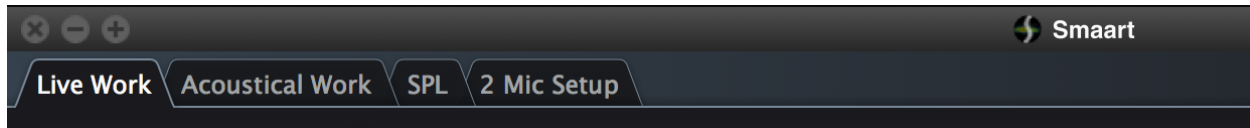
**Note:** When you create a TF measurement, Spectrum measurements for its corresponding inputs will automatically be created in that tab if they do not already exist.

## Duplicating & Moving Measurement Engines

Being able to quickly and easily copy an existing measurement engine (with all of its current settings) from one tab to another is done by selecting an engine in the Measurement Configuration tree, and dragging it into a new tab within the tree. Copy is the default operation, though if you wish to instead move an engine out of a tab and into another, first de-select the ‘Copy’ button below the configuration tree.

**NOTE:** Copying an engine also copies all its current settings (delay, preferred plot, etc) whereas creating a new measurement by choosing from the existing list of measurements only copies the measurement definition and color.

## Tabbed Workspaces



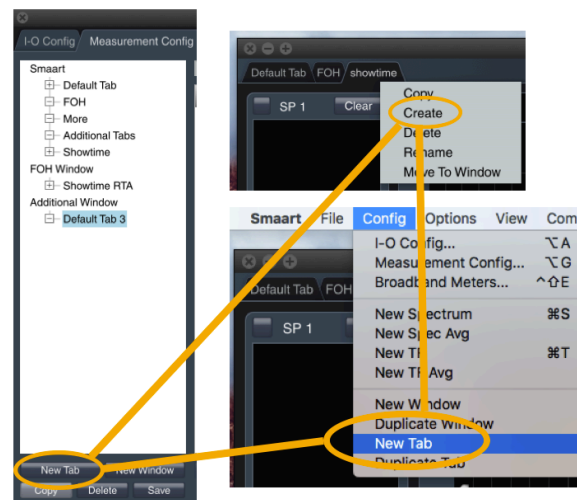
Smaart v8 supports many workspaces, configured as Tabs, and assigned to application Windows. Tabs replace Groups from v7. However, where Groups were only composed of configured Spectrum and TF engines, Tabs are composed of 3 elements:

1. Layout: the display status of the Program Bars.
2. Plot View: The Plot area arrangement
3. Measurement Configuration: the assigned Spectrum/TF engines

There are no *software* limitations to how many Tabs may be configured or assigned to any one window. Deleting a tab will also delete the measurements engines within. Users are prompted to continue in such case.

### Creating Measurement Tabs

Tabs can be created in 3 locations: the Measurement Config tree, Config menu drop down or by right selecting on an existing tab and selecting 'create'. In addition to creating a new tab, right-clicking a tab shows you options to Copy, Delete, Rename, or Move to new Window (see Multi-Window Interface). In all of these cases you are presented with an empty tab in which you will then have to populate with measurement engines. It is worth noting here that anytime you create a transfer function engine, its corresponding inputs Spectrum engines will automatically be created (with their name being the inputs friendly name(s)) and added to that tab (if they do not exist there already).



Anytime you select Copy Tab, a new tab will be created already populated with a complete copy of the current tab.

In all cases, when a new tab is created it is added to the current window and the user is prompted to provide a new name (with a default name provided).



## Destruction of Tabs

Tabs can be deleted directly by right selecting on one and choosing the delete option. Alternatively, you can select on a Tab in the configuration tree and select the delete button. In both cases, the corresponding engines built in the tab will be deleted.

*Regarding Operation Mode Behavior and Tab Layout:* Operation Modes (Real Time and Impulse Response), are designated per window of Smaart. It is not possible to have one *tab* in IR mode and another in Real Time mode simultaneously. However, because Tabs will remember their layouts, as soon as you switch modes the tab will go back to its previous layout and plot view configuration.

## Multi-Window Interface

Smaart v8 allows any number of application windows – effectively a duplicate Smaart interface. A Window is essentially a placeholder for Tabs. That said, each Window has only one active Tab. Windows can be scaled and shown on any display connected to the host computer.

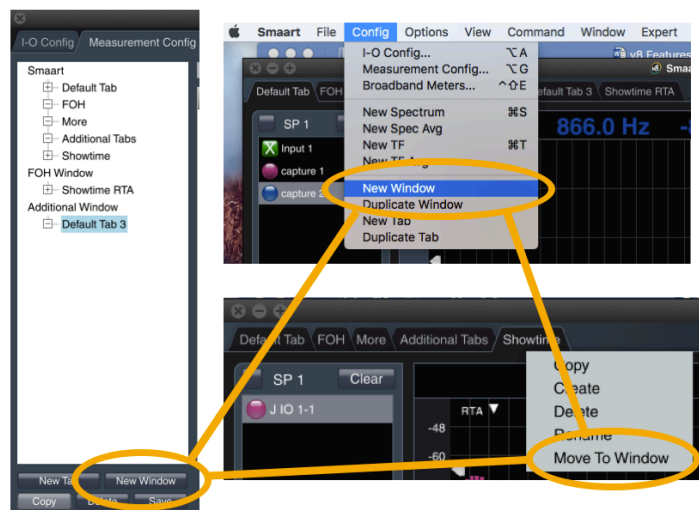


## Creation

Windows are added from the Config menu or from the Measurement Configuration tree. New windows are given a default tab with a Spectrum plot view and the Data Bar, Control Bar, and Command Bar showing.

## Naming

The only time Smaart will ask you to name a window is when you create one in the Configurator via Measurement Config. Window names can be changed from the Configuration Tree by right selecting a Window and choosing “Rename” or from Menu Bar > Window > Rename Window.



## Destruction

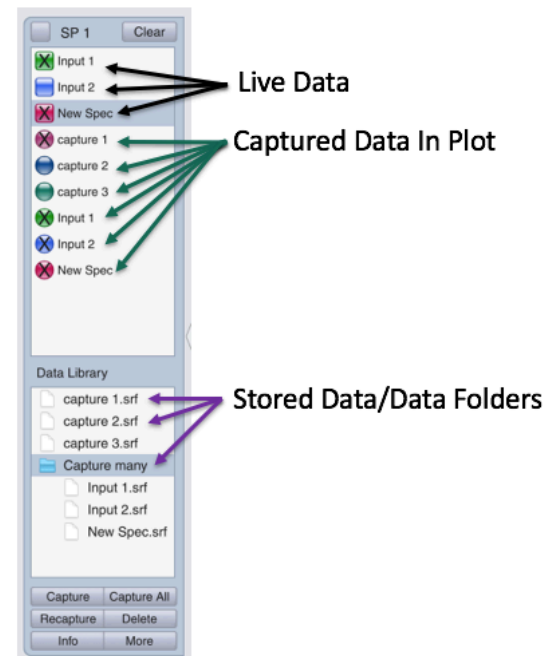
Individual windows can be closed from the Window menu or by using the X in the corner of the window. Closing a window prompts you to either consolidate the tabs into the remaining window, or discard (delete) them. Closing the final window will close Smaart.

## Data Storage & Active Plot Legend

Smaart v8's Data Bar is currently divided into two sections. The Top section of the Data Bar contains the APL (Active Plot Legend). The APL shows a listing of the traces available (currently loaded into RAM) to display in the active plot. This includes both Live measurements (square icons) and static data (circular icons). The APL trace icons indicate the trace color and its current display (hide/show) status. It also displays the current trace offset if one has been applied. Traces can be removed from the APL by selecting a trace and clicking the [Clear] button. Traces can be moved back into the APL by capturing new data, or by clicking+dragging a stored trace from the Data Library.

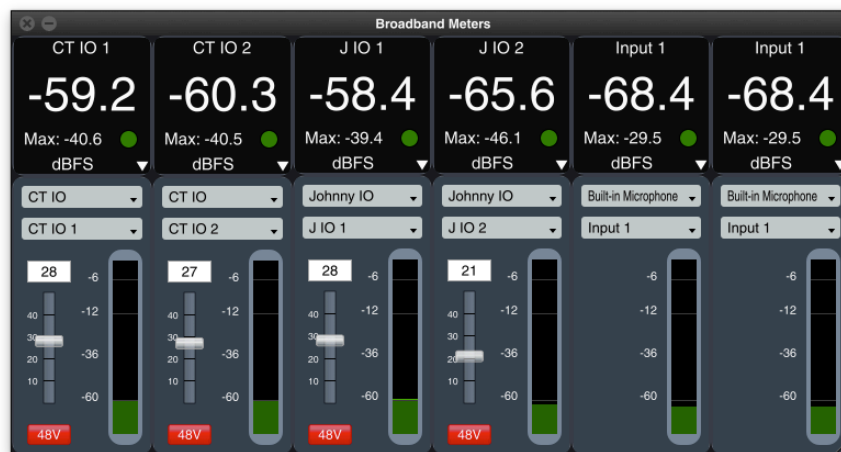
The lower section of the Data Bar contains Smaart's Data Library. This shows reference traces captured to file. When a measurement trace is captured in v8, it is stored in the APL (RAM) for immediate display **and** written to a file in the data library (written to disc). Deleting a file from the Data Library deletes that file from your hard drive (places it in your trash). From the Data Library's drop-down menu, you can set the root file on your hard drive that the data library is accessing and writing to. From the File menu, you can import traces and trace folders into that root folder (or you can just drag them into the data library window from your OS's file system.)

The data bar can now be resized horizontally by clicking and dragging it horizontally from its rightmost border. The Data Bar can be shown or hidden using the hot-key [B] or its triangular hide/show widget.



## Broadband Meters

The broadband input signal(s) of any number of available device inputs can be monitored simultaneously via the Broadband Meter window. Opening the Broadband Meter window displays a fully scalable meter bank, which is wholly separate from the RT and Impulse Response views. Access to this window is found in the Menu Bar > View > Broadband Meters, or simply by pressing the hot-key [E].

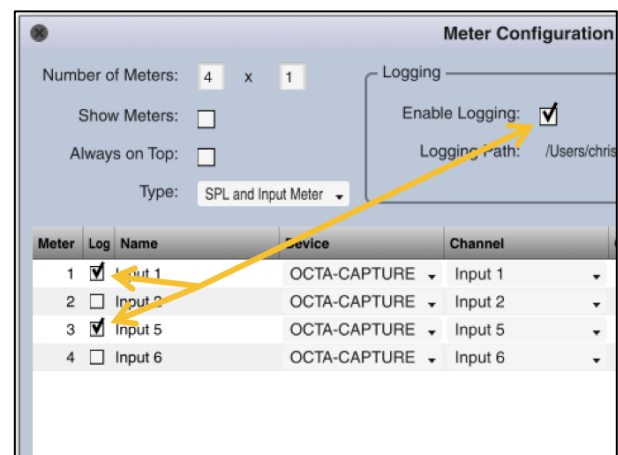


The Smart IO's controls will be displayed on the side of its input meter (à la v7 Di). You can change the interface and channel feeding a configured broadband meter on the fly using the drop downs above the input meter. Also, single selecting within the broadband readout, or in the full scale meter, will open the Broadband Meter configuration dialog.

## Logging and LEQ

Once you've enabled logging from the Broadband Meter Config, you can choose any of the available meters to log from. A file for each input will automatically be created in the designated logging path.

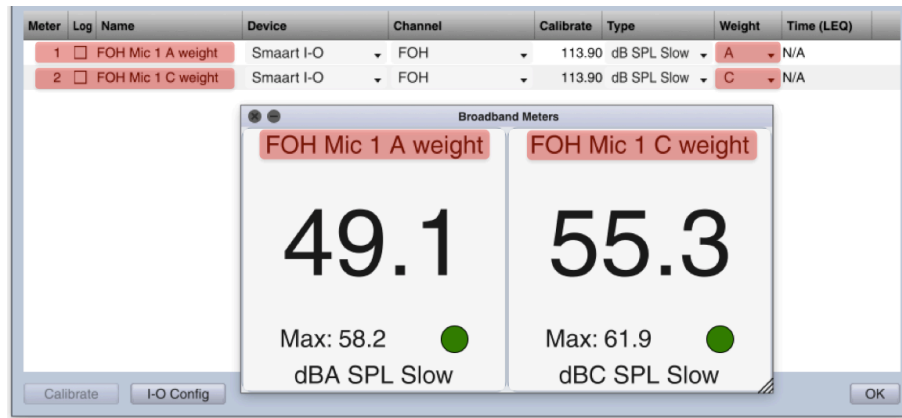
If you do not select the master Enable Logging box, nothing will be logged, regardless of what you have selected under the Log column.



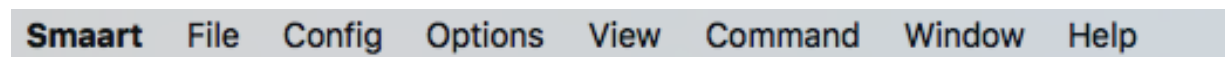
## SPL Meter Names

The Name column of the Broadband Meter Config dialog names the upper-most portion of the SPL readout only. This field is directly editable, and does not affect that input channel in any other way. This is especially convenient when you have configured multiple SPL meters of varying types fed from the same device input. You will notice that the Device and Channel

columns reflect the driver API name and Friendly Name for that input. The other fields are self-explanatory.



## New Menu Bar Layout



It may not be immediately obvious how much the Menu Bar has changed or adapted over the years. Though upon closer examination it is quickly apparent that the v.8 Menu bar has been completely renovated, and is about as concise as can be while still remaining intuitive. As always, menu items that can be accessed via a Hotkey command have those commands noted on the right edge of the menu window.

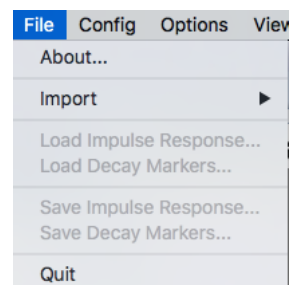
### Smaart Menu

This is the application menu for OS X. It doesn't exist on Windows-based computer and therefore contains no mission critical items.

### File Menu

Certain actions which require you to import from, or otherwise access, the file management system of your computer have been moved here. About and Quit also remain intact from v.7.

The Import submenu refers especially to data pertaining to Real Time Measurements. Traces, Target Curves, Weighting Curves, or ASCII files may all be imported from here.

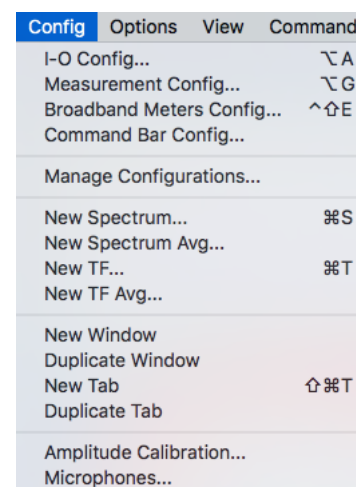


Impulse Response file operations are located in the File menu – you can load an IR file (.wav), IR decay markers, and save both as well from here.

### Config Menu

This menu provides access to all of Smaart's measurement configuration functions. Any item that has to do with setting up Smaart for measurement can be found in this drop down. The top portion of this menu is dedicated to providing access to Smaart's various measurement Configuration dialogs as well as to its management tab for storing and recalling measurement configuration snapshots.

You will notice that certain items are duplicated in other menus – New Window for example. This is done for the sake of being intuitive where, depending on the task at hand, it may make equal sense to go looking for New Window in the Window menu as well as Config.



## Options Menu

Options specifically refers to the general user-adjustable Program Settings which are stored in a standard Program Configuration which is saved via Manage Configurations. This menu provides access to all of the Smaart's individual Options dialogs. With v7 this menu became more and more of a catch-all for commands, which now have a rightful place of their own in the command menu.

| Options                 | View | Command |
|-------------------------|------|---------|
| General...              |      | ⌘ O     |
| Spectrum...             |      | ⌘ S     |
| Transfer Function...    |      | ⌘ T     |
| Impulse Response...     |      | ⌘ I     |
| Delay...                |      | ⌘ D     |
| Zoom...                 |      | ⌘ Z     |
| Skin Manager...         |      |         |
| Signal Generator...     |      | ⌘ N     |
| SPL/LEQ...              |      | ⌘ L     |
| Target Curves...        |      | ⌘ X     |
| Weighting Curves...     |      |         |
| Mic Correction Curve... |      |         |

| View                    | Command | Window |
|-------------------------|---------|--------|
| ✓ Real Time Mode        |         | R      |
| Impulse Response Mode   |         | I      |
| View Presets            |         | ▶      |
| Client Window...        |         | ⌘ R    |
| Broadband Meters        |         | E      |
| Toggle Live IR          |         | ⌘ I    |
| Toggle Peak Hold        |         | P      |
| Toggle Coherence        |         | C      |
| Show Target Curves      |         | X      |
| Reset Decay Markers     |         |        |
| Reset All Decay Markers |         |        |
| ✓ High Contrast         |         | ⌘ ^ X  |
| ✓ Data Bar              |         | B      |
| ✓ Control Bar           |         | O      |
| ✓ Command Bar           |         | U      |
| ✓ Tab Bar               |         | A      |
| ✓ SPL Meter             |         | ⌘ K    |
| Toggle SPL/Klock        |         | K      |

## View Menu

The View menu houses all of the GUI configuration options in Smaart v8 including the Mode select, plot view presets and any settings which change the actual presentation of Smaart's interface, be it the tab layouts, plot view configuration, or display state of Smaart v8's new windows (namely Broadband Meters and the Client Window).

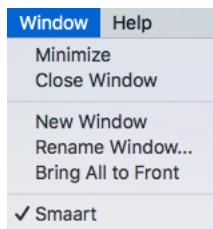
The bottom of this menu is dedicated to the commands for toggling in and out Smaart's various program bars, with check marks to indicate their current view status (check mark = showing).

This menu also houses the toggle between Smaart's default high and low contrast program "skins".

## Command Menu

Any action in Smaart which can be triggered via hot key can now be found in the Command Menu. We've grouped these commands together based on their function – i.e. plot controls, cursor controls, trace controls, etc. All hot key commands can be triggered from the command menu, providing direct access to Smaart's many and various commands – especially convenient when operating Smaart without a keyboard.

| Command                  | Window | Help |
|--------------------------|--------|------|
| Zoom                     |        | ▶    |
| Cursor                   |        | ▶    |
| Toggle Signal Generator  |        | G    |
| Reset Averager           |        | V    |
| Toggle Delay Tracking    |        | D    |
| Activate Delay Finder... |        | L    |
| Increase Delay           |        | .    |
| Decrease Delay           |        | ,    |
| Stored Data Traces       |        | ▶    |
| Scroll                   |        | ▶    |
| Cycle Z Order Reverse    |        | ⌘ Z  |
| Cycle Z Order Forward    |        | Z    |
| Cycle Preferred Plot     |        | M    |
| Front Trace Up           |        | ⌘ ↑  |
| Front Trace Down         |        | ⌘ ↓  |
| Clear dB Offset          |        | Y    |
| Clear All dB Offsets     |        | ⌘ Y  |
| Capture Quick Compare    |        | ⌘ Q  |
| Toggle Quick Compare     |        | Q    |

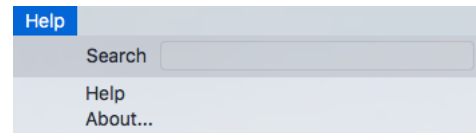


## Window Menu

Being that v8 is a multi-window interface, the Window menu bar item facilitates the basic usability features that you would expect from such an interface.

## Help Menu

Have a question about a function in Smaart? There are hundreds of pages of searchable information here - why not give the Smaart Help files a try? Or RTFM . . .



## Command Bar & Command Bar Configuration

More and more, Smaart is being run on tablet style computers without easy access to a keyboard. This of course makes using Smaart's numerous and helpful Hot Keys a bit tricky. Smaart's new Command Bar gives you access to 10 buttons, which you can map to any of the programs hot-keys.



Configuration of the Command Bar is done via the Command Bar Config dialog, located in the Menu Bar under Config > Command Bar Config. You can give a custom Name to any of the command choices. The button text is a fixed font value, and will automatically cut off any characters that do not fit on one line. The number of characters allowed depends on the window size of the interface (i.e. full screen vs. scaled).



If you do not wish to view the Command Bar in any particular Tab, hiding or showing it is easy; from the Menu Bar > View > Command Bar, the hot key [U], or by selecting on the triangle widget located on the bottom center of main interface.

The configuration of the Command Bar is global. It cannot be configured per window.

## New Hot Keys

Many of the new features in v.8 were clear candidates for new hotkeys. These commands are listed here for your reference.

|                                    |                      |
|------------------------------------|----------------------|
| Show/Hide SPL meter in main window | [Alt/Opt] + K        |
| Dark /Light Contrast Skin          | [Ctrl] > [Shift] + X |
| New Tab                            | [Cmd] > [Shift] + T  |
| New Spec Measurement               | [CMD] + S            |
| New TF Measurement                 | [CMD] + T            |
| New Tab                            | [Shift] > [Cmd] + T  |
| Broadband Meter Config             | [Ctrl] > [Shift] + F |
| Tabs Show/Hide                     | A                    |
| Command Bar Show/Hide              | U                    |
| Control Bar show/hide              | O                    |
| Broadband Meter display toggle     | E                    |
| Toggle Peak Hold (RTA)             | P                    |
| Open Client Window                 | [Alt/Opt] + R        |
| I-O Config                         | [Alt/Opt] + A        |

## Smaart v8 API & Client Window

V8 offers a new method for portable system measurement, the v8 API and the Client Window. Any computer running v8 can act as a host to any other copy of v8. The Host computer does all the heavy lifting – it is the one acquiring the measurement signals and performing the mathematical computations. Any additional computers running Smaart v8, acting as ‘clients’, may remotely access the measurement data. This also includes sending commands to the host for necessary measurement processes, such as starting and stopping the signal generator, activating Smaart’s delay finder, or capturing data.

The Client Window is a special application window that is used to remotely view measurement data from another copy of Smaart v8 running on the Local Area Network. The Client Window can also send basic commands to Smaart for controlling measurements and various measurement settings.

**\*\*The Client Window is not backwards compatible with any other version of Smaart\*\***



### A note about network speed

The network infrastructure and more importantly the transmission speed between the Client Window and the Smaart server computer has an enormous effect on the quality and quantity of measurements that you view in the Client Window. We recommend that at least one of the computers, either the client or the server, is hard-wired into the network. If both computers are wireless, you may experience problems with transmitting/receiving more than a few measurements at a time.

### Server Preparation

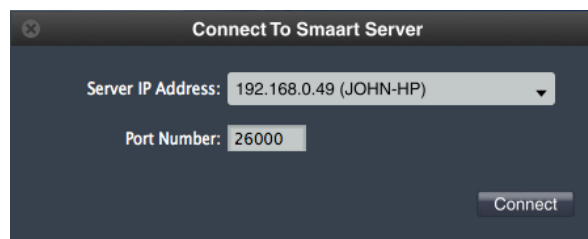
Before connecting to another copy of Smaart using the Client Window, ensure that all required measurements and tabs are configured on the server side. Measurements and tabs cannot be created through the Client Window, and are only populated upon connection. If measurements or tabs are reconfigured on the server after connecting with the Client Window, the window must be closed and reopened to view the changes.

Also ensure that the API is enabled on the server copy of Smaart by going to Options -> General and checking the “Enable API” box. If you’re prompted to allow Smaart through your firewall, make sure you allow it. Note: The default port number 26000 is fine for most networks, do not change it unless you have a good reason.

### Accessing the Client Window

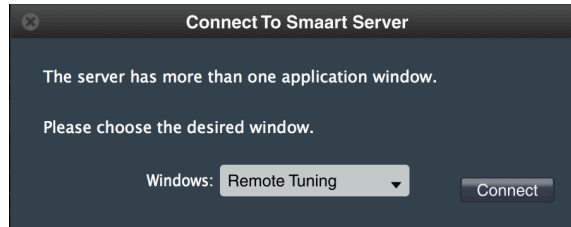
To access the Client Window, click View -> Client Window (or the Alt R hotkey). If this is the first time you’re opening the Client Window, you may be prompted to allow Smaart through your firewall. Make sure you allow it.

Smaart will scan your network for other copies of Smaart v8 with the API enabled (we’ll call them servers) and will present a list of available connections. The IP address and the Hostname of the server are displayed.



If Smaart cannot automatically detect an available server, you may need to check your firewall settings or manually enter the IP address and port number of the server computer.

After the initial connection, the Client Window will scan the server side configuration and present you with a list of available application windows. Choose the window that you want to control.



If only one window exists, the Client Window will just open to the main screen. All tabs from the selected server window are mirrored in the Client Window.

## Supported Measurements

### Spectrum: RTA and Spectrograph

For RTA measurements, banding and averaging are applied on the server before sending the measurement data over the network to the Client Window. Both settings can be changed from the Client Window.

The Spectrograph is calculated locally in the Client Window based on the data displayed in the RTA plot (coming from the server).

### Transfer Function: Magnitude and Phase

Magnitude and Phase data is smoothed and averaged before it is sent over the network. Phase smoothing, Magnitude Smoothing, and Averaging can be changed from the Client Window.

All Transfer Function delay controls are supported in the Client Window, with the commands being funneled to the server.

Live IR is not currently supported in the Client Window.

## Supported Commands

Most program commands and options related to the plot/window view are available in the Client Window. Certain configuration commands such as New \* meas \* are not currently supported.

The following commands/hotkeys are sent to the server:

- Capture Trace
- Toggle Signal Generator
- Reset Averager
- Toggle Delay Tracking
- Activate Delay Finder
- Increase Delay
- Decrease Delay

## Signal Generator

The signal generator can be turned on and off and the level can be adjusted through the Client Window. The signal type is displayed in the Client Window but cannot be changed.

## Trace Capture

Capturing a trace in the Client Window captures the high-resolution measurement data into the client computer's Data Library regardless of what is being displayed in the window. A capture command is also sent to Smaart on the server, using the same trace name that was chosen in the Client Window. Note: changing trace names after they are captured and stored will not propagate to the server.

## Unsupported Measurements/Features/Options

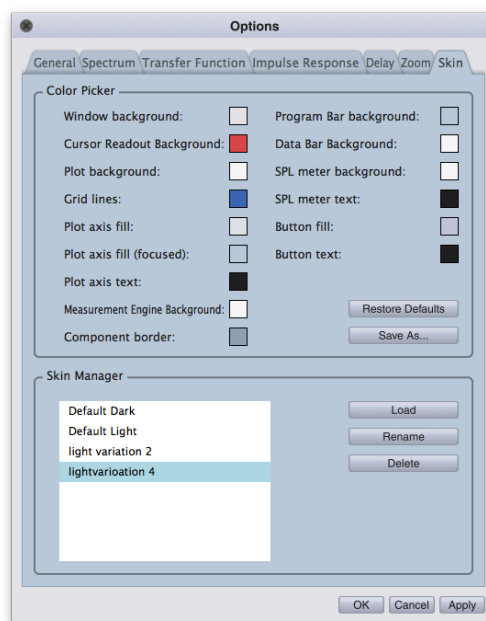
Live IR  
Impulse Response Mode (all)  
Broadband Meters (and measurement engine meters)  
Peak Hold  
Instantaneous Response (Mag)  
Unwrap Phase  
Phase as Group Delay  
Coherence Blanking  
Toggle Coherence

## Program Skins

In an effort to expand capabilities of customizing the user interface, we've opened up the skin color picker for various interface elements. While this may not be something used regularly, it is entirely possible that you may find a situation where altering the color of certain plot elements may be desirable. The initial selections are based on the default Light or Dark skin state when you open the Skin Options dialog from the Options menu.

Once you've changed a parameter in the color picker, choosing 'Save As' will prompt you to name it, adding that new skin to the Skin Manager. Skins can be loaded, renamed, deleted, and even shared. Sharing skins is done by accessing the Skins root file directory, where you can backup skins, and share them with others.

The default skins, as well as any configured skins, are not deleted when you restore the program to defaults. You can delete the skins from the Skins Options dialog, or alternatively accessing the root directory and putting them in the trash.



## Licensing, Registration, and System Requirements

Smaart v8 uses 3 blocks of 6 alphanumeric characters for its license codes (xxxxxx-xxxxxx-xxxxxx). Just as with v7, register your license code to your my.rationalacoustics.com account to access the v8 installer.

### Minimum Suggested Computer System Requirements

#### Windows

Operating System: Windows 7 or newer (32 & 64 bit)

CPU: 2 GHz Dual-Core Intel i5 Processor or faster

RAM: 2 GB or greater

Graphics: Intel HD 4000 or better, or 256 MB dedicated video RAM

Display: Min. 1024x600 pixel display

Sound: Audio Hardware with OS compatible ASIO, Wav/WDM drivers.

#### Mac

Operating System: Mac OSX 10.7 (32 + 64 bit) or newer

CPU: 2 GHz Dual-Core Intel i5 or faster

RAM: 2 GB or greater

Graphics: Intel HD4000 or better, or 256 MB dedicated video RAM.

Sound Hardware: Audio Hardware with compatible Core Audio device drivers.

### High Definition Display Support

Smaart v8 automatically detects and natively supports high definition displays (including Apple Retina displays).

---

## Glossary of Terms

### *Active Plot Legend*

The top portion of the Data Bar, listing traces that are located in the active plot, the trace show/hide controls, and trace offsets. Data here is stored in RAM.

### *API*

Application Programming Interface - The back-end interface that allows external programs to send commands to and pull measurement data from Smaart.

### *Broadband Meters*

A scalable SPL/input meter window that can be configured to monitor (and Log) any number of available inputs. Includes IO controls for gain reporting devices (only Smaart IO currently)

### *Client Computer*

Computer running Smaart v8 that is using the Client Window to acquire data from and control measurements on the Host Computer.

### *Client Window*

A dedicated window in Smaart v8 that provides API connection and control to a remote/host copy of Smaart v8.

### *Command Bar*

The program bar located below the plot area, containing user defined buttons. Any command corresponding to a hot-keys can be assigned to a Command Bar button via the Command Bar Config.

### *Configuration*

All Smaart's configuration data - Measurement configuration (engines, window layouts, tab configuration, meters, IO settings) and all settings and options are saved and recallable as configurations. Data is not contained in stored/recallable configurations.

### *Configurator*

This dialog houses the IO Configuration, Measurement Configuration, and Broadband Meter Configuration dialogs. Each can be accessed directly from the Config menu or viewed using their tabs in the Configurator dialog.

### *Control Bar*

The program bar to the right of the plot area, containing measurement controls, plot view controls, the signal generator, and the SPL meter.

### *Data Bar*

The program bar located to the left of the plot area. The data bar consists of the Active Plot Legend (top) and the Data Library (bottom).

### *Data Library*

The lower portion of the data bar, displaying stored Smaart data on your hard drive. The area shows data from a designated root location on your hard drive – this can be user assignable.

### *Focus*

The element of the Smaart environment that active commands will effect. These include the Window, Tab, Plot, Measurement Engine and Control Element. When invoking a command, particularly via hotkey or menu, it is important to know which elements of the Smaart interface have Focus so that you know how the command will be enacted.

### *Host Computer*

Computer running measurements and serving data to client computers via Smaart's API

### *Layout*

A configuration of the Plot Area and Program Bars

### *Measurement Configuration*

Smaart's measurement configuration info - Measurement engines, window layouts, tab configuration, broadband meter settings and all IO settings.

### *Measurement Engine*

Or simply Engine, is the name given for configured single or dual channel measurements to be activated for analysis. Measurement Engines use Global parameters unless otherwise specified in the specific measurement engine details within the tab configuration.

### *Mode*

The current operational Mode – either Real-Time or IR. This is Window specific, i.e. two separate windows can be running in separate mode simultaneously.

### *Multi-Window Interface*

Smaart v8 will run multiple windows as part of a single Smaart session pulling configuration data from a single global measurement configuration. Windows can contain multiple Tabs.

### *Plot Views*

The arrangement of plots in the plot area. Plot Views can be captured and assigned to a hotkey from the View menu.

### *Program Bars*

The 4 hide-able regions surrounding the plot area; the Data Bar, Tab Bar, Control Bar, and Command Bar. Program Bar configuration is stored by Tab.

### *Program Skin*

In addition to high and low contrast, users have the ability to create custom color palates or custom colors for various buttons on the interface. The Skin Manager can be accessed via the Option menu.

### *Tabs*

The UI element and container comprising a Layout, Plot View, measurement engine group and associated data. There can be only one active tab per window. Multiple tabs can be created from the main UI, or from the Measurement Config dialog.

### *Tab Bar*

The program bar located above the plot area, containing the tab UI elements, used to select the active tab for a window. The Tab drop-down located in the Control Bar can also be used for this task.

### *Window*

Display area for the Smaart program. A window contains at least one active Tab and any number of configured Tabs. When you start Smaart, the default window layout is all bars in, with a single RTA plot view. With no configured measurements, Smaart will prompt you to enter session configuration (a la v7).

---

## Configuration Ownership

The following is a list of the settings and controls as they apply to Smaart v8 configuration:

### *Set/Controlled Global:*

- Spectrum and TF Global Measurement Settings
- Measurement Options (***unless specifically noted***)
- Skin (including High/Low contrast)
- Tab Bar Visible/Hidden State
- Broadband Meter Settings
- Client Window Settings
- Command Bar Settings
- Smaart Data Library
- Unique Measurement and Tab Names
- IO configuration (Names, Use, Calibration)
- Measurement Configuration (Window – Tab – Engine Definition)
- Signal Generator

### *Set/Controlled by Window:*

- Window SPL Meter Source
- Active Tab
- Measurement Mode

### *Set/Controlled by Tab:*

- Measurement Engines in Tab
  - Run Status ea.
  - Delay & Tracking Status ea.
  - Non-global Measurement Engine Settings
- Layout (Command, SPL, Data and Control Bar Visibility)
- Plot View
- Static Data – visibility and preferred plot status
- Measurement Names Unique

### *Set/Controlled by Plot:*

- Plot type
- Zoom
- Trace z-order